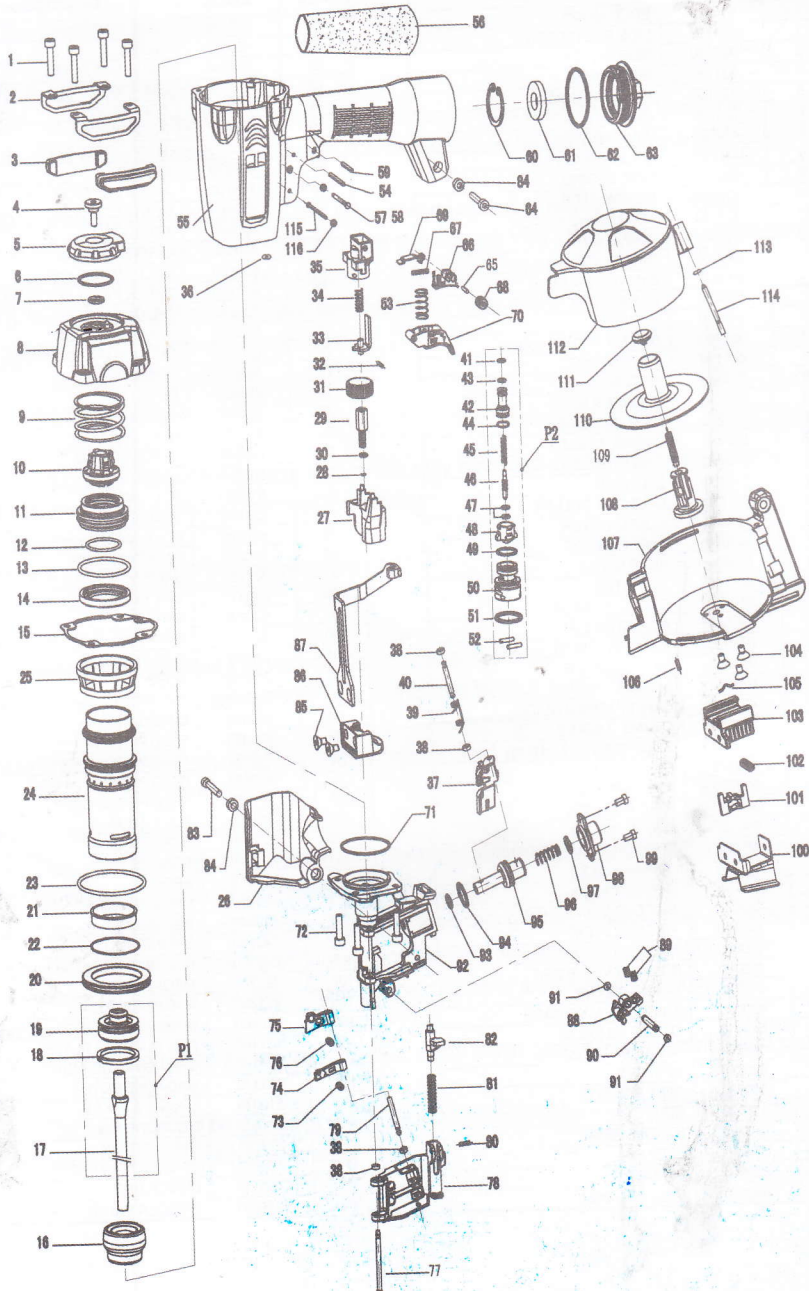


# TOOL SCHEMATIC-CRN45A



## PARTS LIST-CRN45A

| NO. | CODE   | Description           | NO. | CODE    | Description           |
|-----|--------|-----------------------|-----|---------|-----------------------|
| 1   | 610120 | BOLT M5X25            | 60  | 630110  | SNAP RING 32          |
| 2   | 321790 | SIDE PROTECTOR        | 61  | 420540  | FILTER                |
| 3   | 421160 | SIDE BAFFLE           | 62  | 510590  | O-RING 43.7X2.65      |
| 4   | 321780 | BOLT(Loctite)         | 63  | 110410  | END CAP               |
| 5   | 421150 | EXHAUST COVER         | 64  | 610120  | BOLT M5X25            |
| 6   | 321590 | EXHAUST FILTER        | 65  | 640010  | ROLL PIN 2X8          |
| 7   | 410550 | WASHER                | 66  | 420590  | TRIGGER BRACKET       |
| 8   | 110400 | CYLINDER CAP          | 67  | 620370  | SPRING                |
| 9   | 620770 | COM. SPRING           | 68  | 110190  | ADJUST BUTTON         |
| 10  | 410540 | PISTON STOP           | 69  | 320880  | CONTACT PLATE         |
| 11  | 421140 | HEAD VALVE PISTON     | 70  | 420580  | TRIGGER               |
| 12  | 510910 | O-RING 30X2           | 71  | 510580  | O-RING 42.5X1.5       |
| 13  | 510920 | O-RING 42X2.65        | 72  | 610100  | BOLT M5X20(Loctite)   |
| 14  | 410530 | CYLINDER SLEEVE       | 73  | 620790  | CHECK PAWL SPRING (A) |
| 15  | 520270 | GASKET                | 74  | 210550  | CHECK PAWL (A)        |
| 16  | 410520 | BUMPER                | 75  | 210540  | CHECK PAWL (B)        |
| 17  | 321760 | DRIVER BLADE(Loctite) | 76  | 620780  | CHECK PAWL SPRING (B) |
| 18  | 421130 | PISTON RING           | 77  | 322200  | DOOR PIN              |
| 19  | 310360 | PISTON                | 78  | 210530  | DOOR                  |
| 20  | 421120 | CYLINDER RING         | 79  | 321900  | CHECK PAWL PIN        |
| 21  | 520260 | CYLINDER SEAL         | 80  | 640060  | ROLL PIN 3X10         |
| 22  | 510930 | O-RING 42.5X1.8       | 81  | 620840  | LATCH SPRING          |
| 23  | 510940 | O-RING 58X2.65        | 82  | 210590  | LATCH                 |
| 24  | 310350 | CYLINDER              | 83  | 610060  | BOLT M5X10            |
| 25  | 421110 | CYLINDER COLLAR       | 84  | 321890  | WASHER                |
| 26  | 421100 | GUARD COVER           | 85  | 610600  | BOLT M6X10(Loctite)   |
| 27  | 421090 | SAFETY GUIDE          | 86  | 210580  | SAFETY LOWER          |
| 28  | 630090 | SNAP RING 4           | 87  | 321880  | SAFETY                |
| 29  | 321750 | ADJUSTER              | 88  | 210570  | NAIL GUIDE            |
| 30  | 510140 | O-RING 5.15X1.8       | 89  | 620830  | SPRING                |
| 31  | 421080 | ADJUSTER DIAL         | 90  | 321870  | STEP PIN              |
| 32  | 640020 | ROLL PIN 2.5X10       | 91  | 510050  | O-RING 2.8X1.8        |
| 33  | 321740 | SAFETY UPPER          | 92  | 210560  | NOSE                  |
| 34  | 620670 | SPRING                | 93  | 510280  | O-RING 9X2            |
| 35  | 421070 | SAFETY UPPER GUIDE    | 94  | 510400  | O-RING 18X2           |
| 36  | 510950 | O-RING 3.55X1.8       | 95  | 321860  | FEED PISTON           |
| 37  | 210520 | FEED PAWL             | 96  | 620820  | FEED PISTON SPRING    |
| 38  | 420170 | PIN CAP (A)           | 97  | 410560  | FEED PISTON BUMPER    |
| 39  | 620760 | FEED SPRING           | 98  | 321850  | FEED PISTON CAP       |
| 40  | 321820 | FEED PAWL PIN         | 99  | 610020  | BOLT M4X8             |
| 41  | 510180 | O-RING 5.8x1.9        | 100 | 321840  | SCALE SHIELD          |
| 42  | 330010 | TRIGGER VALVE BUSHING | 101 | 421230  | SCALE SLIDER          |
| 43  | 510210 | O-RING 6.3X1.8        | 102 | 620810  | SPRING                |
| 44  | 510240 | O-RING 8.6x1.9        | 103 | 421220  | SCALE BRACKET         |
| 45  | 620050 | TRIGGER VALVE SPRING  | 104 | 610340  | HEX BOLT              |
| 46  | 320110 | TRIGGER STEM          | 105 | 322180  | SPRING HOLDER (A)     |
| 47  | 510030 | O-RING 2.5X1.4        | 106 | 640160  | ROLL PIN 3X25         |
| 48  | 420080 | TRIGGER VALVE CAP     | 107 | 421210  | MAGAZINE              |
| 49  | 510380 | O-RING 16X1.8         | 108 | 421200  | MAGAZINE POST         |
| 50  | 420090 | TRIGGER VALVE CAGE    | 109 | 620800  | MAGAZINE SPRING       |
| 51  | 510410 | O-RING 18.3X2.65      | 110 | 421190  | NAIL SUPPORT PLATE    |
| 52  | 640250 | STRAIGHT PIN B3X15    | 111 | 421180  | SPRING HOLDER (B)     |
| 53  | 620740 | SPRING                | 112 | 421170  | MAGAZINE COVER        |
| 54  | 640180 | ROLL PIN 3X30         | 113 | 510070  | O-RING 3.15X1.5       |
| 55  | 110420 | BODY                  | 114 | 321830  | MAGAZINE PIN          |
| 56  | 410200 | HANDLE GRIP           | 115 | 323130  | STRAIGHT PIN          |
| 57  | 321810 | STEP PIN              | 116 | 410880  | STRAIGHT PIN CAP      |
| 58  | 420950 | PIN CAP               | P1  | D321761 | DRIVER UNIT           |
| 59  | 640150 | ROLL PIN 3X24         | P2  | T420091 | TRIGGER VALVE         |